

NEIGHBOURHOOD DEVELOPMENT PLAN RESIDENTS' SURVEY RESULTS

Work is well underway on inputting and analysing the data from the recent Household Survey. Here, we look at what residents like about living in Odd Rode.

A large majority of the residents like the countryside (89%), the presence of peace & quiet and lack of light pollution (74%) and, to a lesser extent, the nearby canal network (63%). A majority (43%+ 26%) also likes the sense of community.

'Local facilities' do not seem to be appreciated as much as the other aspects of our parish. This may reflect the reality that there are less facilities in our parish than there are in nearby towns and that the general trend in rural areas has been to lose facilities over time.

The response from Rode Heath broadly reflects that of the Parish as a whole. However, it is worth noting that there seem to be a higher sense of community and the highest appreciation of the canal.

The response from Scholar Green is also similar to the response from the whole Parish but the sense of community is less prominent compared to the Parish as a whole or Rode Heath.

In Mow Cop/Mount Pleasant the canals are appreciated less than in the rest of the parish. They are situated ½ mile to one mile down the hillside and are not a significant part of the local landscape. The lack of local facilities is notable in the responses for this area.

This information, together with the responses on residents' dislikes, will be used (with information from the Parish Plan, Census data, etc) to form a vision for our parish.



Table 5: What does your household like about Odd Rode?

n=825	Not scored	Very much	Likes	A little	Not much	Not at all
	Percentage					
Countryside	1.45	89.09	4.61	1.45	0.85	2.55
Nearby canal	6.06	62.79	16.36	8.97	2.67	3.15
Peace & quiet	4.24	73.82	11.27	4.85	2.30	3.52
Community	6.42	43.39	25.70	15.76	5.70	3.03
Facilities	9.33	25.09	21.33	20.24	12.97	11.03

Table 6: What does your household like about Odd Rode? (Rode Heath)

n=343	Not scored	Very much	Likes	A little	Not much	Not at all
	Percentage					
Countryside	1.46	87.17	5.25	2.04	1.46	2.62
Nearby canal	2.92	70.26	15.45	5.83	3.50	2.04
Peace & quiet	2.62	72.59	12.83	5.83	2.62	3.50
Community	3.79	51.02	29.45	11.08	2.04	2.62
Facilities	6.12	29.74	26.53	21.28	10.50	5.83

Table 7: What does your household like about Odd Rode? (Scholar Green)

n=259	Not scored	Very much	Likes	A little	Not much	Not at all
	Percentage					
Countryside	1.54	91.89	3.86	1.54	0.00	1.16
Nearby canal	5.41	68.34	15.83	8.49	0.39	1.54
Peace & quiet	6.56	72.20	11.20	5.41	2.32	2.32
Community	7.72	39.00	19.69	20.85	10.04	2.70
Facilities	9.65	27.80	22.01	14.29	11.58	14.67

Table 8: What does your household like about Odd Rode? (Mount Pleasant/Mow Cop)

n=223	Not scored	Very much	Likes	A little	Not much	Not at all
	Percentage					
Countryside	1.35	88.79	4.48	0.45	0.90	4.04
Nearby canal	11.66	44.84	18.39	14.35	4.04	6.73
Peace & quiet	4.04	77.58	8.97	2.69	1.79	4.93
Community	8.97	36.77	26.91	17.04	6.28	4.04
Facilities	13.90	14.80	12.56	25.56	18.39	14.80

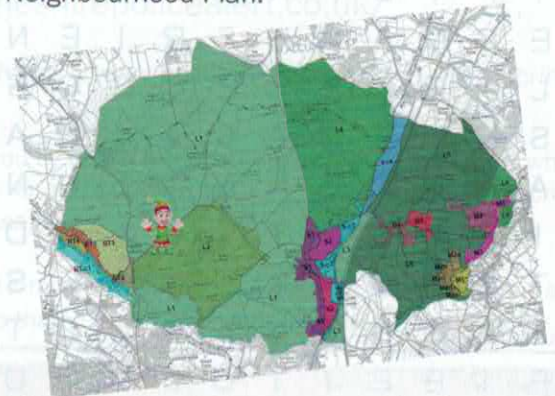
NEED TO GET TO HOSPITAL OR THE DOCTOR?

Alsager Voluntary Care operate a volunteer car scheme in the area. They provide transport to medical clinics, doctors, dentists, opticians, hospital appointments, etc. for people who have no other means of transport. **To book (3 days' notice is required) phone 07936543730 (this is a dedicated booking line).** Suggested donations - short local trips e.g. local surgeries, £3, longer journeys e.g. Leighton or Macclesfield hospital £10.

NEIGHBOURHOOD DEVELOPMENT PLAN ... LANDSCAPE & CHARACTER ASSESSMENT

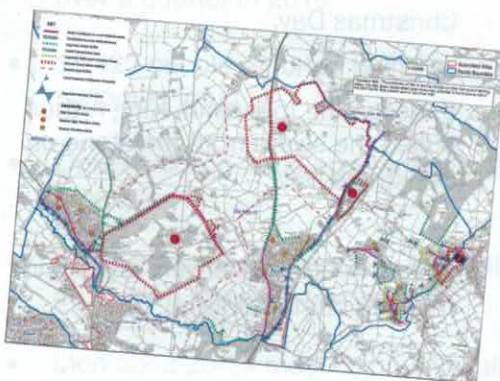


The Landscape and Settlement Character Assessment is one of a number of key documents that will provide the necessary evidence base to support the vision, objectives and policies within the Neighbourhood Plan.



Character assessments record the special qualities that give an area its sense of place and unique identity. They are widely recognised as useful tools, helping to aid the planning, design and management of future development in a particular locality.

Environmental Associates were commissioned by the Parish Council in 2017 to carry out an independent landscape and settlement character assessment. This Parish wide character assessment provides an overview of the key qualities and characteristics that define the Parish of Odd Rode.



It has been prepared in support of a larger project –

the production of the Odd Rode Neighbourhood Development Plan. Once adopted, the Neighbourhood Plan will be used by Cheshire East Council when considering planning applications for development within the local area.

SECTION 5 : ODD RODE CHARACTER AREAS

INTRODUCTION

Character areas divide landscapes into areas of distinct, recognizable, and consistent character, and groups together areas of similar character. The purpose of this study has been to identify and describe the special qualities that give an area its sense of place and unique identity.

Landscape Character: A distinct, recognizable and consistent pattern of features in the landscape that makes one landscape different from another, other than better or worse.

Landscape Character Types: are general types which possess broadly similar patterns in every area where they occur.

The same landscape character types may occur in different parts of the parish.

Landscape Character Areas: are the output of individual geographical areas of the same type that can have their own particular identity. Character areas are geographically specific, attached to a single, named area.

The study determines the boundaries of each character area by identifying the patterns in the landscape resulting from the interaction of natural and cultural factors that create landscape character as judged by landscape observers. In some cases the boundaries between areas are clear, defined and consistent, but sometimes the boundaries are less clear, defined and consistent or inconsistent and not as defined or precise.

The Odd Rode character assessment divides the parish into settlement units. The Odd Rode settlement units are defined as areas of land which are adjacent to the settlement units. The Odd Rode settlement units can be split into four broad character areas:

- Cheshire Dale and its associated estates and farmsteads
- Rode Heath and Thurlwood
- Scholar Green, the A54, Macclesfield Canal and the Macclesfield
- Mosses to London consider
- Moss Copp and its associated settlements

Within these four broad character areas the study identifies 18 landscape character areas. The local character areas are:

Rode Heath and Thurlwood

- RT1 - Heath Avenue Estate
- RT2 - Chapel Lane, Sandbach Road (South)
- RT3 - Sandbach Road (North)
- RT4 - South Eastern Estate
- RT-CA - Rode Heath and Thurlwood Canal

Scholar Green

- S1 - 158 Scholar Green
- S2 - Little Moor Lane and Portland Drive
- S3 - Weaver Tree Estate
- S-C1 - Scholar Green Canal South
- S-C2 - Scholar Green Canal North
- S-CA - Heritage Marina, Ramsdell Hall

Moss Copp

- M1 - The Bank
- M2 - Spring Bank
- M3 - Mount Pleasant Centre
- M4 - The Limes and Estates
- M5 - Woodcock Lane, Chapel Bank, High Street
- M6 - Primrose Street and Station Road

Local Landscape Character Areas

Areas outside the main character study have been divided into local landscape areas:

- L1 - Cheshire Plain
- L2 - Rode Hall Farmsteads
- L3 - Canal, Railway Gaps
- L4 - Little Mosses Hall
- L5 - Staffordshire Ridge Slopes
- L6 - Moss Copp

The report uses best practice methods to undertake a character study of the Neighbourhood Plan Area at a scale of 1:25000 and it;

- defines and describes the characteristics of each landscape character area and sets out its key characteristics and visual attributes;
- provides guidance on the condition and value of each character area and highlights particular sensitivities including valuable trees;
- describes the contribution of the landscape setting to the Conservation Areas and other historic features

A copy of the report can be downloaded at oddrode.org.uk